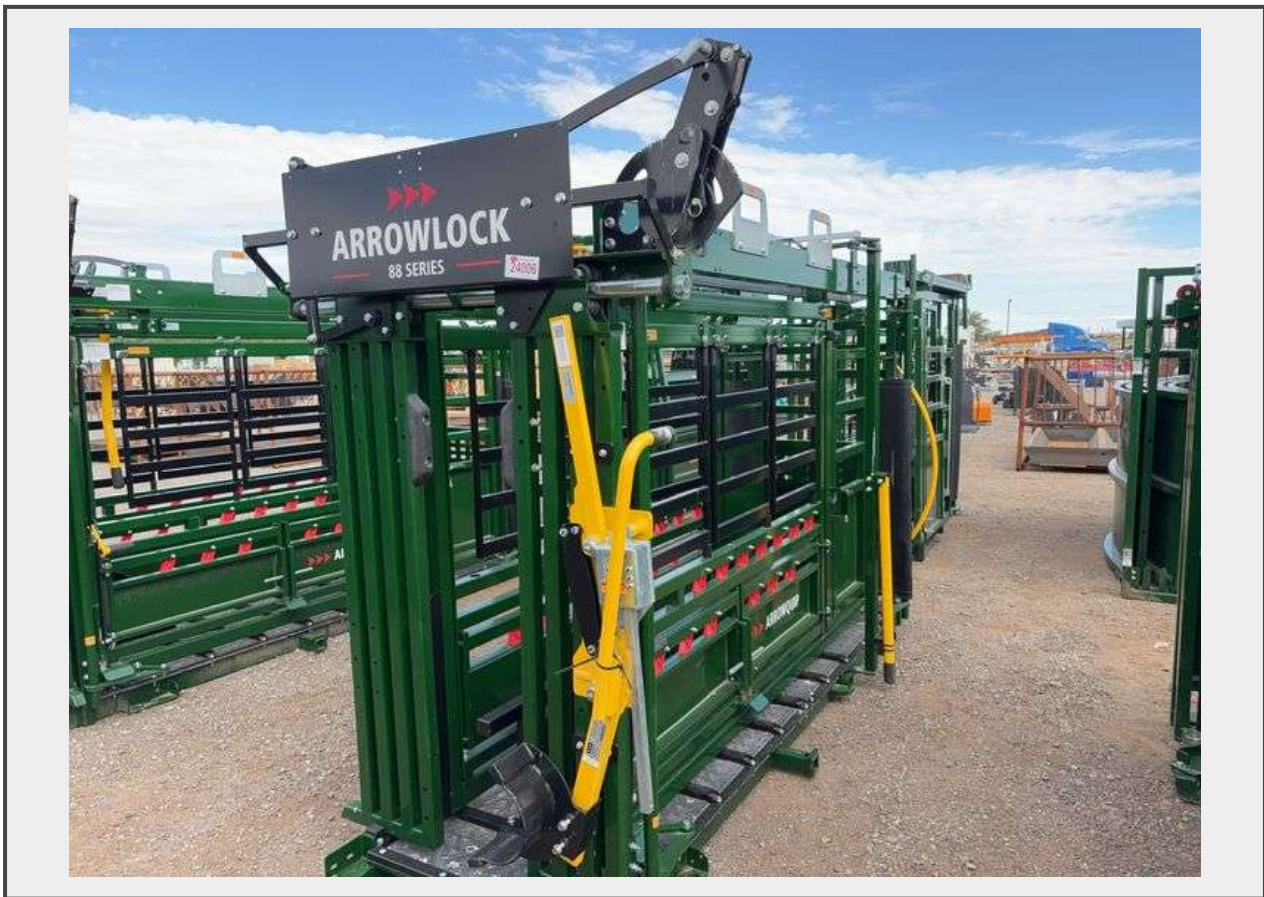


**Sale Name:** September 13th Regional Online Equipment Auction

**LOT 24006 - Arrowquip 8800 Squeeze Chute w/ Vet Cage - Albuquerque NM**



**Off Site Loadout Hours** 09/14/25 9:00 AM and Ends 09/19/25 4:00 PM by appointment

**Terms** THIS LISTING IS SUBJECT TO J&J AUCTIONEERS TERMS AND CONDITIONS, INCLUDING WITHOUT LIMITATION, THIS CATALOG IS ONLY A "GUIDE" AND MAY NOT BE ACCURATE, THAT ALL SALES ARE FINAL AND THAT BUYER IS RESPONSIBLE FOR INSPECTION OF ALL EQUIPMENT PRIOR TO BIDDING. ALL LOTS HAVE DEFICIENCIES. PHOTOS MAY SHOW MULTIPLE LOTS IN THE BACKGROUND. QUANTITIES AND LENGTHS ARE APPROXIMATE J&J AUCTIONEERS DOES NOT OFFER SHIPPING ON THIS LOT AND SUCH SHIPPING IS THE SOLE RESPONSIBILITY OF THE BUYER. THANK YOU FOR YOUR BUSINESS.

### Description

W/ AL-940 Head Holder, sternum bar

- NEW ratchet locking design head gate with different settings for different sized livestock
- Head gate handle can be used at any point alongside the chute
- Curtain-style head gate opens to a full 31.5" top to bottom
- Squeeze chute ranges from 31.5" fully open to 7.75" fully closed
- Two rows of rump fingers to ensure safety no matter the size of the animal
- Ambidextrous rolling door that can be operated from either side of the chute
- Vet door opens a full 180° in both directions for full maneuverability
- 6 Removeable side access panels that can be configured multiple ways to suit your operation
- Removeable split bottom access gates

- Full swing-out emergency exit
- Standard Traction Bars
- 6 ½" opening at the front of the chute for needle access
- True virgin rubber infinite floor dampens sound and provides excellent traction
- Mount brackets so you can add load bars or secure the cattle squeeze chute to concrete
- Transport ready with a wheel kit add-on
- Rectangular bars to limit bruising on cattle

**Quantity: 1**



<https://auctions.jandjauction.com/>